



NEW
GENERATION
PLANTATIONS *platform*

FOR PEOPLE, PLANET AND PROSPERITY

FOR PEOPLE, PLANET AND PROSPERITY

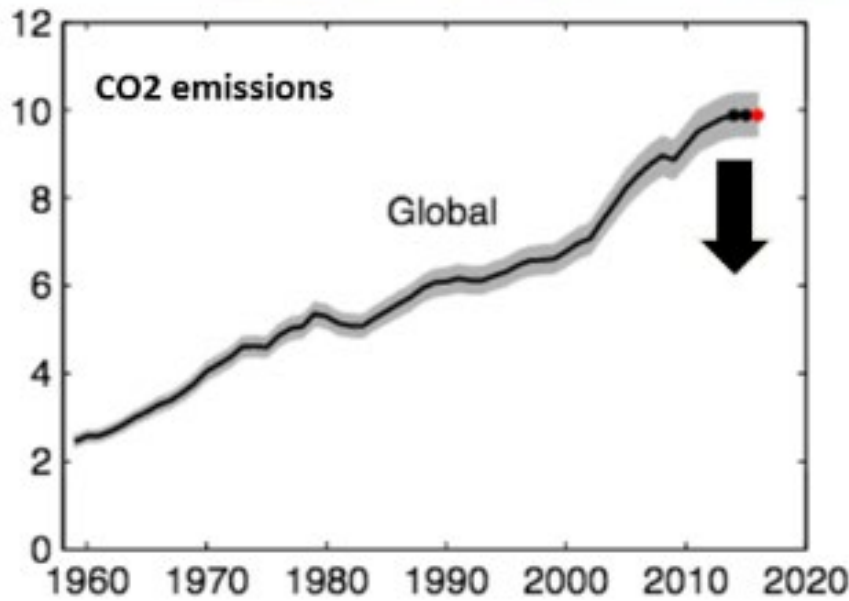
Andrew Heald MICFor

#NGP2019

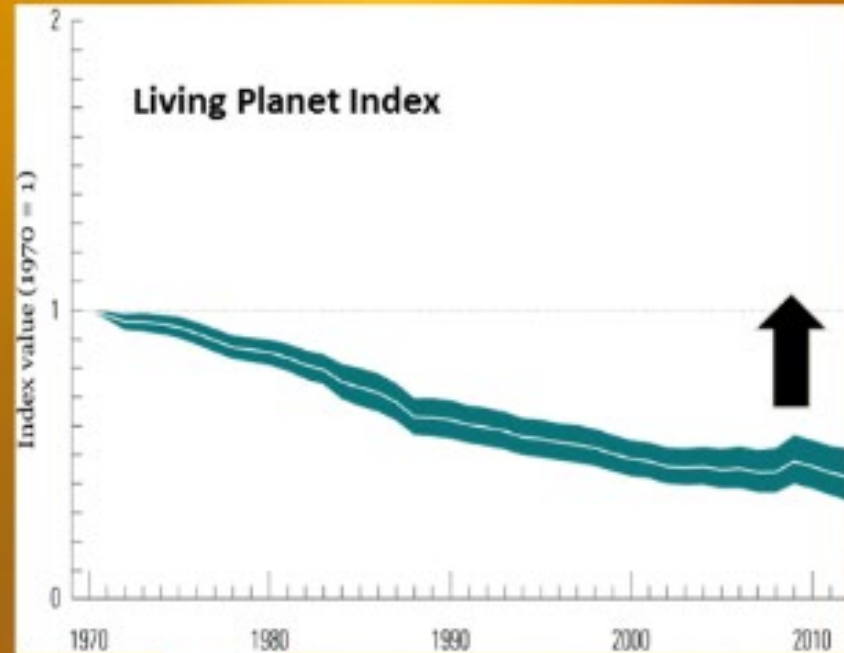
@andyheald

Bending the Curves

Climate



Nature



“

We cannot solve our problems with the same thinking we used when we created them.

A. Einstein



NEW GENERATION PLANTATIONS *platform*

FOR PEOPLE, PLANET AND PROSPERITY

China Green Carbon Foundation;
Forestry Commission of Great Britain;
Governo Estadual do Acre, Brazil;
APSD; Arauco; CMPC; Kimberly -
Clark; Mondi; The Navigator
Company; New Forest Company;
Stora Enso; Suzano; UPM; Veracel

Value: US\$100 billion

Land: 11 million ha

~100% FSC

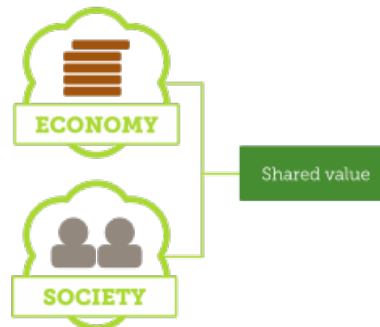
NGP PARTICIPANTS
MANAGE 11 MILLION
HECTARES, OF WHICH
45% IS DEDICATED
TO PLANTATIONS.

THE REST IS MADE UP
OF CONSERVED AND
RESTORED FORESTS
AND OTHER NATURAL
ECOSYSTEMS, ALONG
WITH GRAZING LAND,
SMALL-SCALE
FARMING
AND
INFRASTRUCTURE.

PRINCIPLES

- Maintain ecosystem integrity
- Protect and enhance high conservation values
- Developed through effective stakeholder involvement processes
- Contribute to economic growth and employment

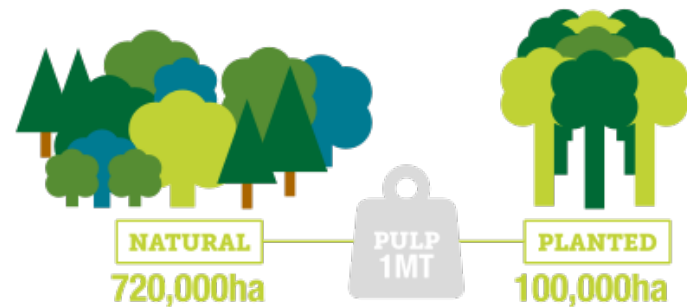
CREATE HIGH CONSERVATION & SOCIAL SHARED VALUES



WHY?

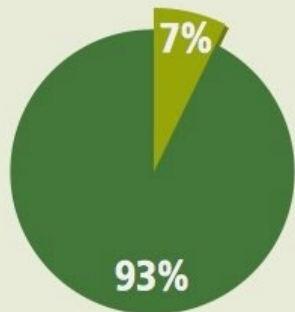
Logging from natural forests is 816 million m³ (26%) lower due to wood from Plantations

(Buongiorno & Zhu, 2014)



**PLANTATIONS
MAKE UP 7% OF
GLOBAL FOREST
COVER BUT
PROVIDE 33%
OF COMMERCIAL
TIMBER**

The bulk of the world's forest is natural forest.



Global forest area, 2015

- Planted forest area
- Natural forest area

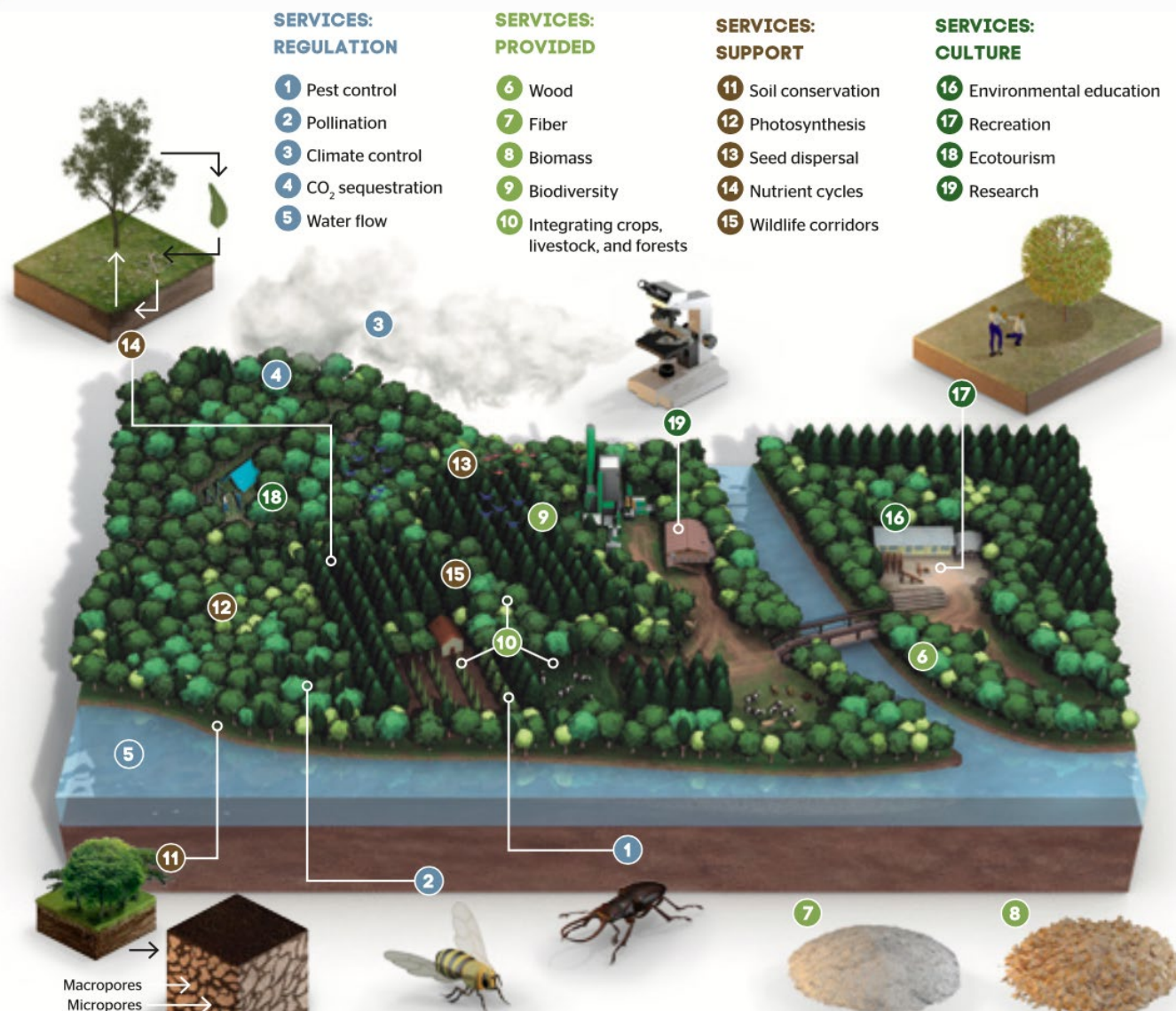
SUSTAINABLE INTENSIFICATION

"Sustainable intensification: An approach to produce higher levels of forest ecosystem services from the same area of land while decreasing the negative environmental, social and cultural impacts of forestry production."

Proposed definition for sustainable intensification in forestry from Tim Payn, lead scientist at New Zealand research institute Scion, based on IIED (2015) Sustainable Intensification Revisited.

- **Landscape stewardship** - novel governance mechanisms
- **Land-use planning** - forestry & agriculture connected
- **Management** - precision forestry, agriculture & restoration

Production, restoration, mitigation: a new generation of plantations



PRECISION FORESTRY & RESTORATION

Plantations can bring degraded land back into productive use, alongside restoring natural ecosystems and the services they provide.

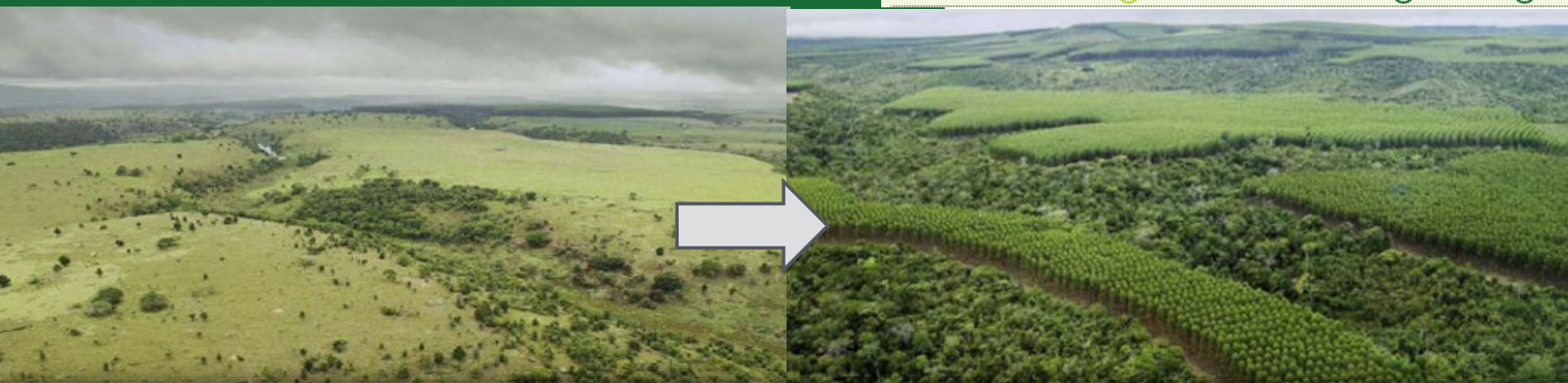






Figure 2. Ecosystem services from plantations, in relation to other ecosystems and land uses.
Source: Baral et al. 2016. A proposed framework for assessing ecosystem goods and services from planted forests.

Ecosystem services	Provision of ecosystem services from planted forests in relation to:			
	 Native forests	 Native grasslands	 Managed pasture	 Agriculture
Provisioning services				
Food production	↓	↓	⊖	↓
Timber production	↑	↑	↑	↑
Medicines	↓	↓	↑	↑
Freshwater	↓	↑	↓	↑
Regulating services				
Fresh air regulation	↓	↑	↑	↑
Carbon sequestration and storage	↑	↑	↑	↑
Groundwater recharge	↓	↓	↓	↑
Natural hazard regulation	↓	↑	↑	↑
Water purification	↓	↓	↑	↑
Disease regulation	↓	?	↑	↑
Pollination	↓	↓	↓	↑
Erosion prevention and soil protection	⊖	↓	⊖	↑
Habitat or supporting services				
Habitat for species	↓	↓	↑	↑
Maintenance of genetic diversity	↓	↓	?	↑
Cultural services				
Spiritual and religious values	↓	↓	?	?
Aesthetic values	↓	↓	?	?
Recreation and ecotourism	↓	?	↑	↑

Pirard et al. (2015) found evidence of **REDUCED DEGRADATION** of natural forests with the expansion of plantations



FARM Trees

and create a new generation of plantations



*Plantations that allow wildlife to pass
through natural forest corridors*



That benefit local communities and economies



The best thing of all,



Confor
Promoting forestry and wood

[Our story](#)

[Join us](#)

[News](#)

[Resources](#)

[About Confor](#)

Leading the way for forestry and timber

[Our publications](#)

[Home](#) / [About Confor](#) / [This is Confor](#)

The voice of the forestry sector

Confor is a membership organisation that promotes sustainable forestry and wood-using businesses.

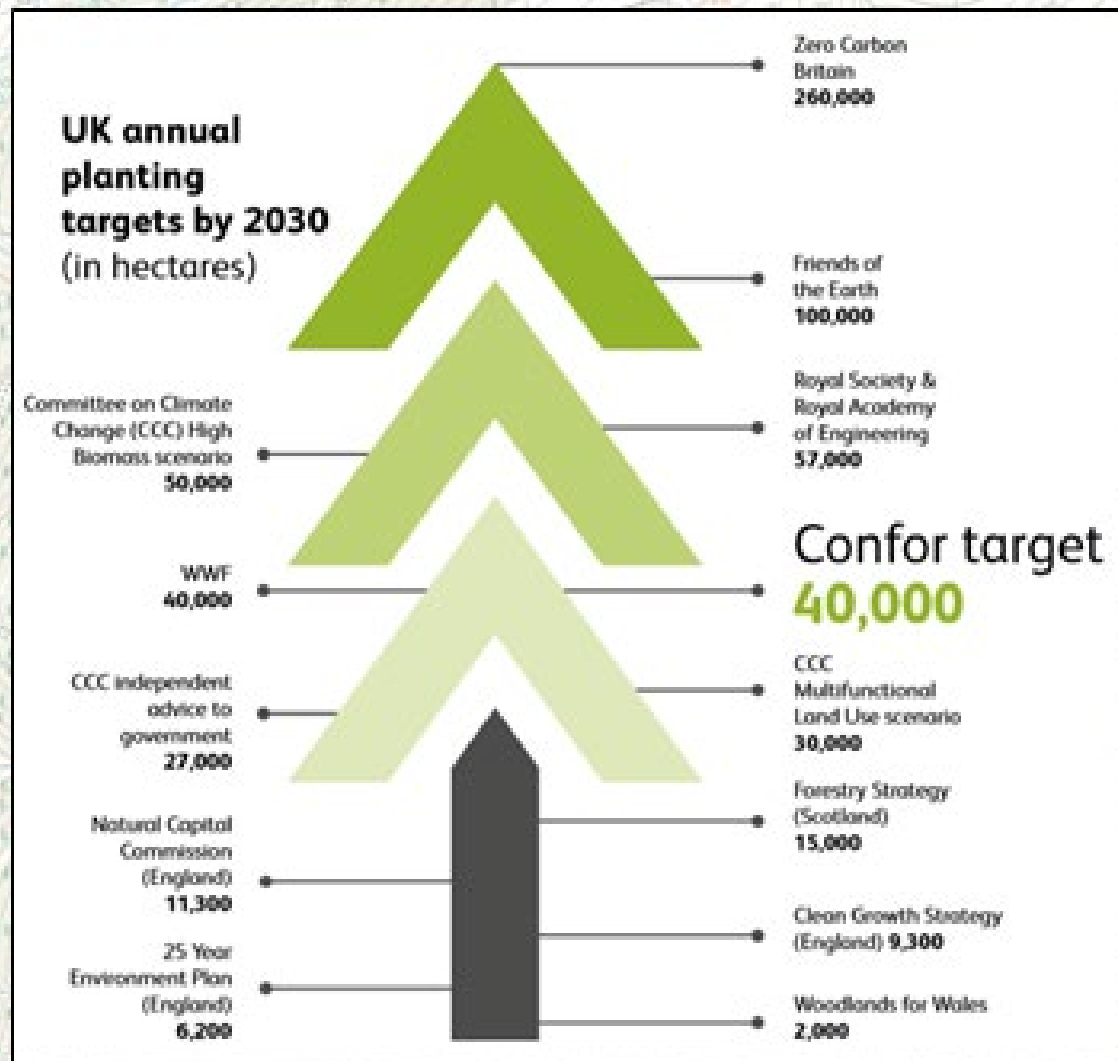
@forestsandwood



Confor
Promoting forestry and wood

Planting targets

Confor Call





THINK
GLOBAL
PLANT
LOCAL



Twitter -
@andyheald

newgenerationplantations.org

@forestsandwood



Confor
Promoting forestry and wood