

Metsään.fi – a free portal of forest data for forest owners and service providers

Tanja Lepistö

2.5.2018

LAPIN AMK
Lapland University of Applied Sciences

4H

Luke
LUONNONVARAKESKUS

METSÄHALLITUS

MTK

metsäkeskus
forest centre

Programme for Sustainable Growth and Jobs

Leverage from
the EU
2014–2020


European Union
European Regional
Development Fund

Smart Arctic Forest Network SAFoN

- Project period: 1 Sept. 2017 – 31 Aug. 2019
- Financing:
 - Regional Council of Lapland and European Regional Development Fund (80%), other funding (20%)
- Budget: €441,142
- Manager: Finnish Forest Centre, other promoters: Natural Resources Institute Finland (LUKE), Lapland University of Applied Sciences (UAS), Metsähallitus, 4H in Finland, Central Union of Agricultural Producers and Forest Owners (MTK)
- Key words: internationality, partnership, visibility of forestry



Metsään.fi – with customers eyes

- eServices for forest owners and service providers
- Encourages the users to carry out silvicultural works
- Shows the possibilities of each forest estate
 - Soil and forest site
 - Growing stock
 - Treatment proposals for a five-year period
 - Environmental values (habitats of special importance)
 - Latest maps and aerial photographs

- Forest expertise is not required from the forest owners

Programme for Sustainable Growth and Jobs

Leverage from

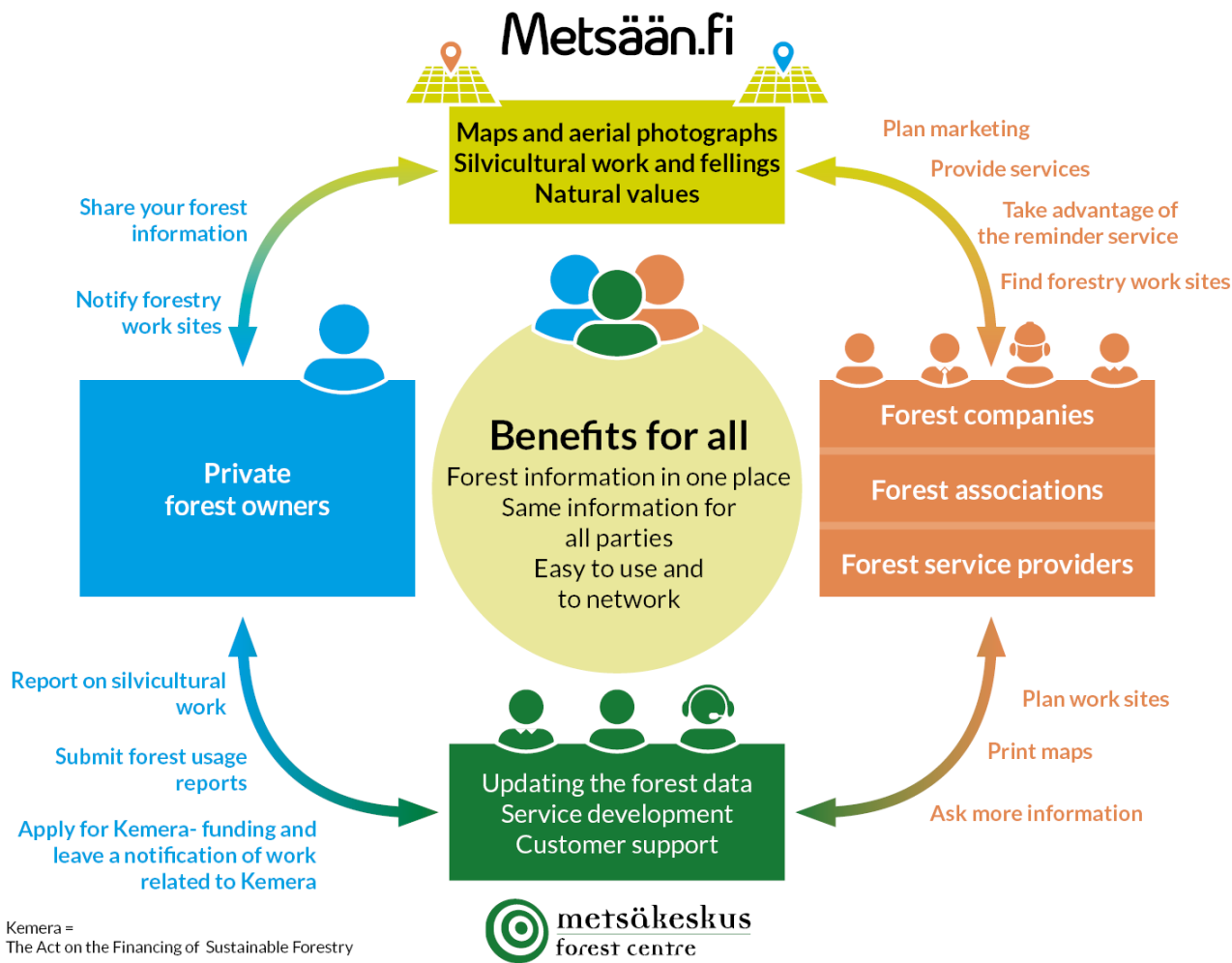
the EU
2014–2020



European Union
European Regional
Development Fund

Metsään.fi – behind the scenes

- The collection method is based on **remote sensing**
- The annual **growth is calculated** for each estate
- **Data is updated** according to forest owners' and service providers' notifications
- **Combines** different **data** resources



Programme for Sustainable Growth and Jobs

Leverage from
the EU
2014–2020



Metsään.fi by numbers

- **11,8 million hectares** of forest data in the service
- **95 455 forest owners** have visited the service
- **595 service providers** have joined the service
- **2 393 operators** use the service
- **3,3 million hectares** available to operators
- **420 000 consents** available to operators



Metsään.fi Demo and more information

- The demo is available in Finnish:
https://www.metsaan.fi/group/metsanomistaja_private
- Also information in English available:
<http://www.metsaan.fi/briefly-in-english>



Thank you
Tanja Lepistö
Project manager
Smart Arctic Forest Network – SAFoN
Tel. +358 40 028 5708
tanja.lepisto(a)metsakeskus.fi



Programme for Sustainable Growth and Jobs

Leverage from
the EU
2014–2020

